

# MSR600U MSR OPOS SKD Develop Manual

Dongguan Yixin Technology Co., Ltd.  
[www.kprinter.cn](http://www.kprinter.cn)

---

## MSR600U MSR OPOS SKD Develop Manual

# MSR600U MSR OPOS SKD Develop Manual

Dongguan Yixin Technology Co., Ltd.  
www.kprinter.cn

---

## catalog


1. SDK setup.....	3
2. Development procedure .....	4
3. Reference DEMO .....	5
4. Magnetic card Data .....	5

# MSR600U MSR OPOS SKD Develop Manual

Dongguan Yixin Technology Co., Ltd.  
www.kprinter.cn

---

## 1. SDK setup

- 1、locate into setup directory, double click  **setup.exe** for setup sdk environment  
The setup just like as figure 1 below:

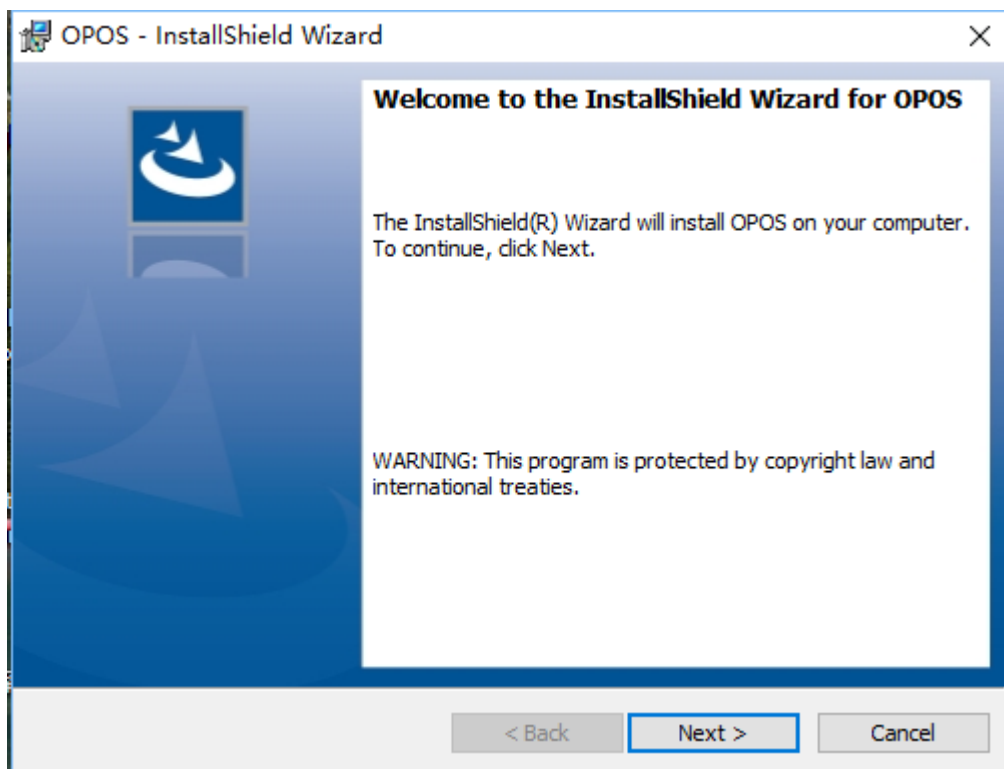


figure 1 setup program

- 2、Once you have finished setup,  
OPOS ActiveX register in your system.  
OPOS MSR Service Object registered in you system, the service name is 'RF400MrSo Class'

## 2. Development procedure

The whole development procedure just as figure 2 below:

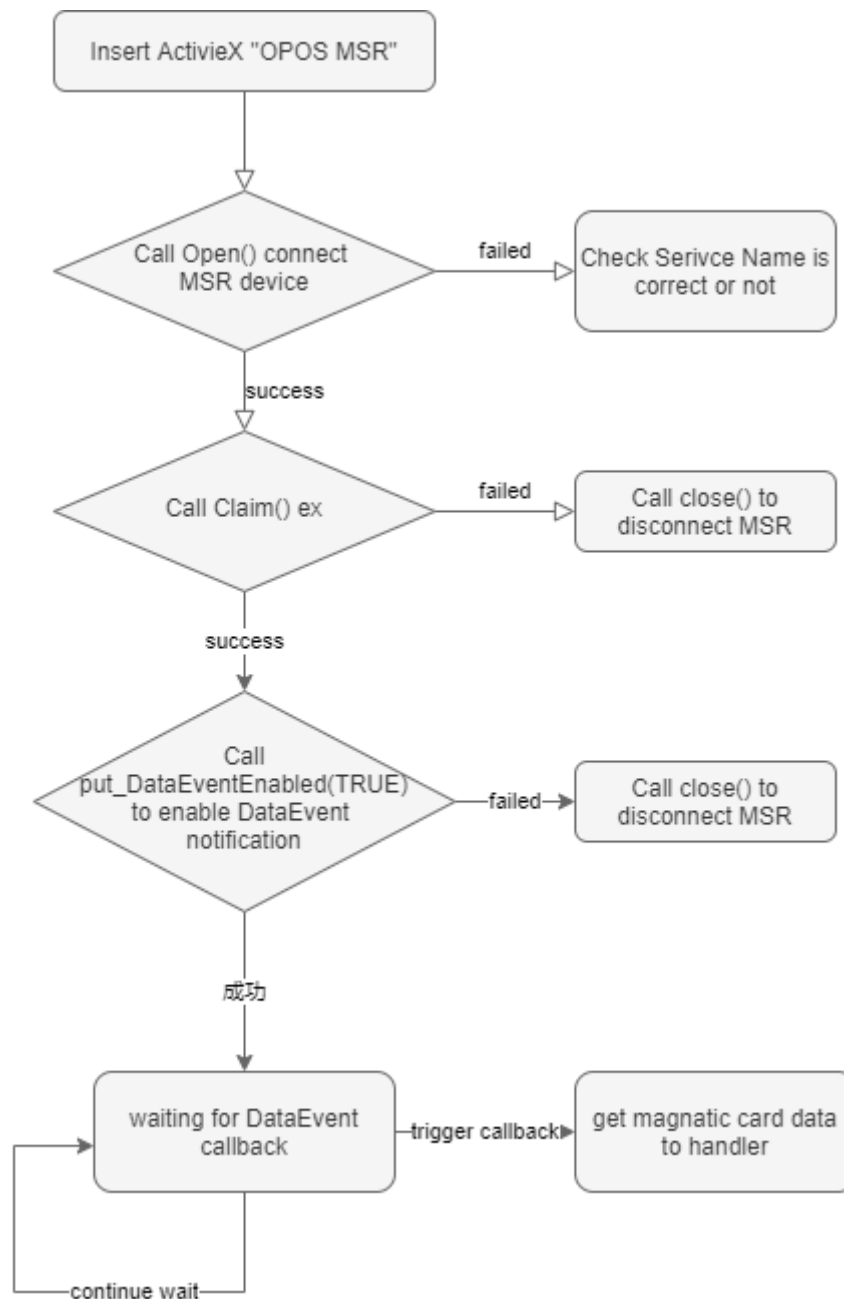


figure 2 development procedure

MSR Service Object Name: RF400MrSo Class

# MSR600U MSR OPOS SKD Develop Manual

Dongguan Yixin Technology Co., Ltd.  
www.kprinter.cn

## 3. Reference DEMO

VC++ Demo: teach you how to user OPOS ActiveX to interactive with MSR device, directory structure just as figure 3 below:

名称	修改日期	类型	大小
Debug	2021/8/30 10:55	文件夹	
ipch	2021/8/14 9:35	文件夹	
Release	2021/9/13 9:02	文件夹	
testOposMsr	2021/9/13 23:59	文件夹	
testOposMsr.sln	2021/8/10 11:47	Microsoft Visual...	2 KB
testOposMsr.VC.db	2021/9/13 23:59	Data Base File	68,144 KB

figure 3 VC demo

## 4. Magnetic card Data

- Once you has enabled OPOS data event notification by (`m_msr.put_DataEventEnabled(TRUE)`), if you swipe card and then the notification will be triggered.
- `OnDataeventMsrl(long Status)` is the callback handler, status=10, means that magnetic card data was send to OPOS ActiveX, you can get data by `m_msr.get_TrackXData()`
- Magnetic card track data just as table 1 below:

Track data	mean
Blank error	Blank track error
S error	S track error
P error	P track error
E error	E track error
L error	L track error
Length = 0	track data length = 0
Other content	Normal return track data

table 1 Track data